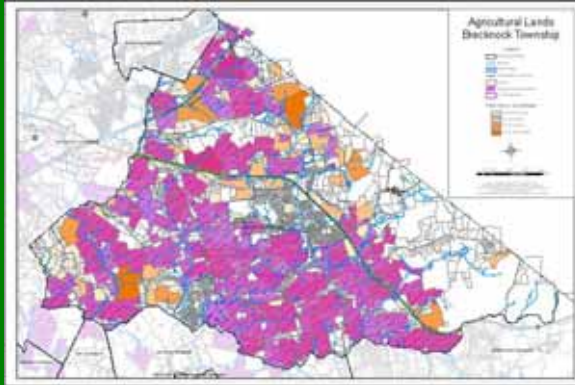
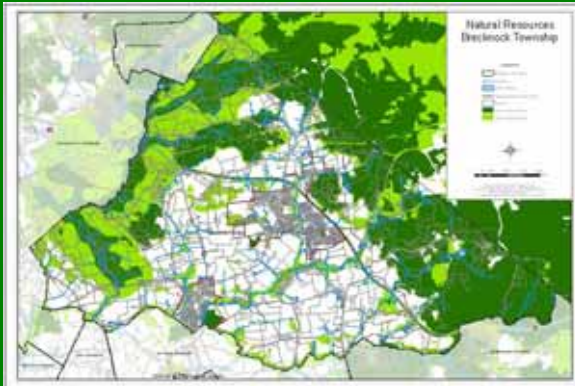


## Step 1: Identify Resources With GIS Mapping

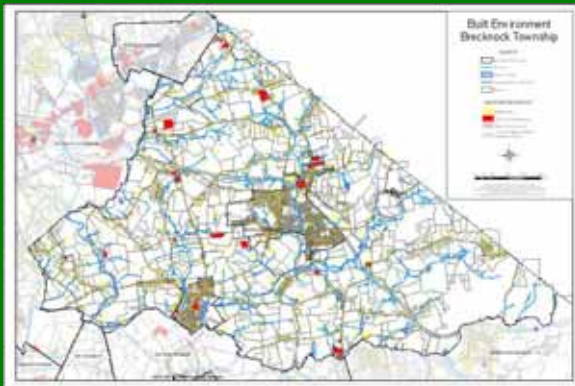
Agricultural Lands



Natural Resources



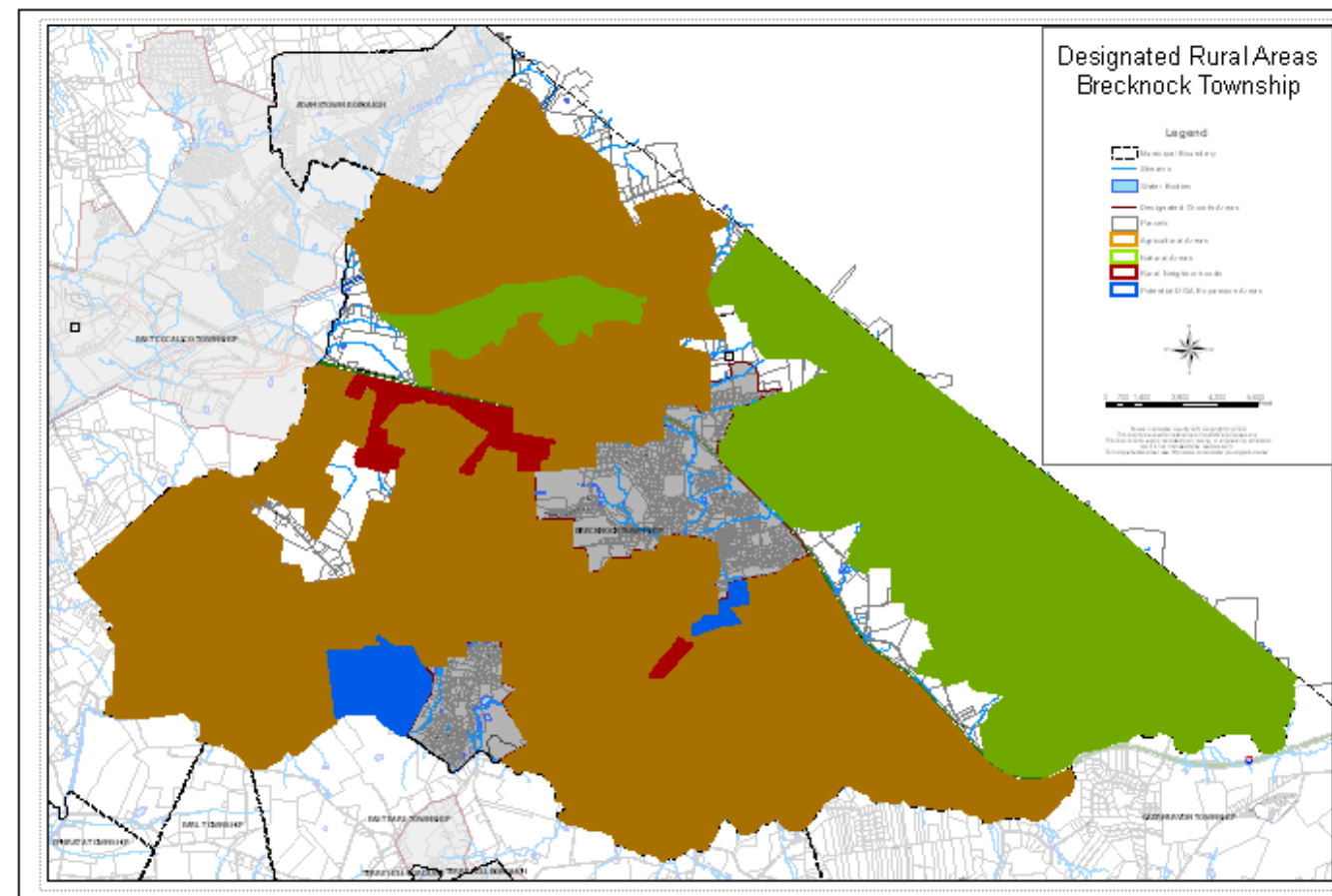
Built Environment



Aerial Photo



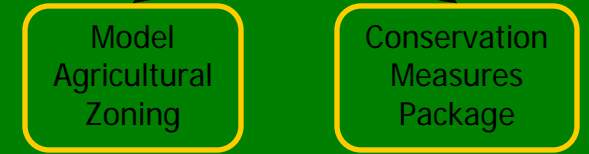
## Step 2: Establish Designated Rural Areas



NOTE: This illustration was prepared only for the purpose of exemplifying the DRA process. The areas shown should not be construed to be part of an official planning process or boundaries suggested by LCPC to Brecknock Township.

## Step 3: Adopt Policies and Action Measures

### Agricultural Areas



### Natural Areas



### Rural Centers

